

# Accessories – BDT47 Swivel Gauge Adapter

## Description

Swivel gauge adapters are used for easy positioning of a pressure gauge. With the BDT47 swivel gauge design it is possible to adjust the dial face 360° in order to get the best position of readability of the pressure gauge. The swivel gauge prevents difficulties with mounting and positioning NPT thread without the risk of over or under tightening which can cause leakages. This design uses a metal to metal closing system which removes the sealing ring from the assembly. All wetted parts are made out of the alloy selected.

## Material of construction

The BDT47 is standard manufactured from AISI 316(L) material and optionally could be manufactured in any other Alloy. Below the most common materials are listed.

General name	UNS	Wst.
AISI 316 (L)	S31600	1.4404
254 SMO (6Mo)	S31254	1.4547
Duplex 2205	S32205	1.4462
Alloy C-276	N10276	2.4810
Alloy 625	N06625	2.4856
Alloy 400	N04400	2.4375
Super Duplex 2507	S32760	1.4501

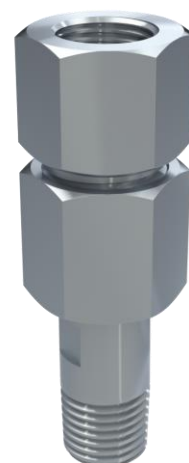
## Pressure

The BDT47 is designed to withstand a pressure of 689 bar when tightened with the correct torque and lubrication.

Type	Max working pressure
BDT47	689 bar

## Thread sizes

The BDT47 is suitable to be executed in different thread types and sizes. The process and instrument connection do not have to be similar. Even male x male, or female x female is possible in various thread sizes. The most common is the NPT male x NPT female and seen as the market standard. Thread types like parallel (G and Metric) or tapered (ISO 7-1) is also possible.



## Accessory pre-cautions

The BDT47 can be supplied as a component or mounted to the pressure instrument. When mounted the assembly is tested up to the maximum pressure of the pressure instrument. When positioning it is important that the gauge adapter is loosened before positioning. As it is a metal to metal principle there is a risk of galling of the gasket area. Loosening and re-tightening with the advised torque is recommended.

Torque	Lubrication K-factor
200 Nm	0.21

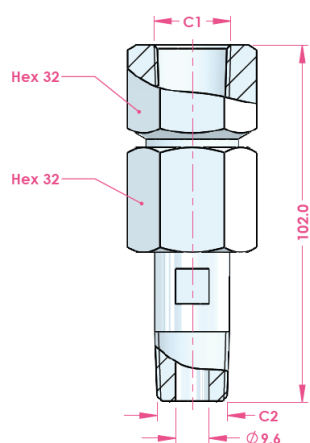
## Marking

The BDT47 is marked with relevant information such as the heat number, pressure range, and material of construction.

## Special service

The gauge adapter can be used in special service. The parts are cleaned for oil and grease and a special lubrication is applied on the thread. A Krytox® grease and will be applied and tested in a controlled environment to prevent contamination with oil and grease.

## Dimension table: BDT47



C1 - Instrument	C2 - Process
1/2" NPT-f	1/2" NPT-m
G ½ (EN 837)	G ½ A
M20 x 1.5 - f	M20 x 1.5 - m

BDT 47 – 17<sup>th</sup> of November 2021

Holland – Romania – India – Thailand – Dubai – USA

To our knowledge, the information contained herein is accurate as of the date of this document. However neither Badotherm, nor its affiliates makes any warranty, express or limited, or accepts any liability in connection with this information or its use. This information is for technical skilled persons at their own discretion and risk and does not relate to the use of this product in combination with any other product. The user alone finally determines suitability of any information or material in contemplated use, the manner of use and whether any patents are infringed. This information gives typical properties only. Badotherm reserves the right to make changes to the specifications any materials without prior notice. The latest version of the datasheet can be found on [www.badotherm.com](http://www.badotherm.com).

© 2015 Badotherm, all rights reserved. Trademarks and/or other products referenced herein are either trademarks or registered trademarks of Badotherm.