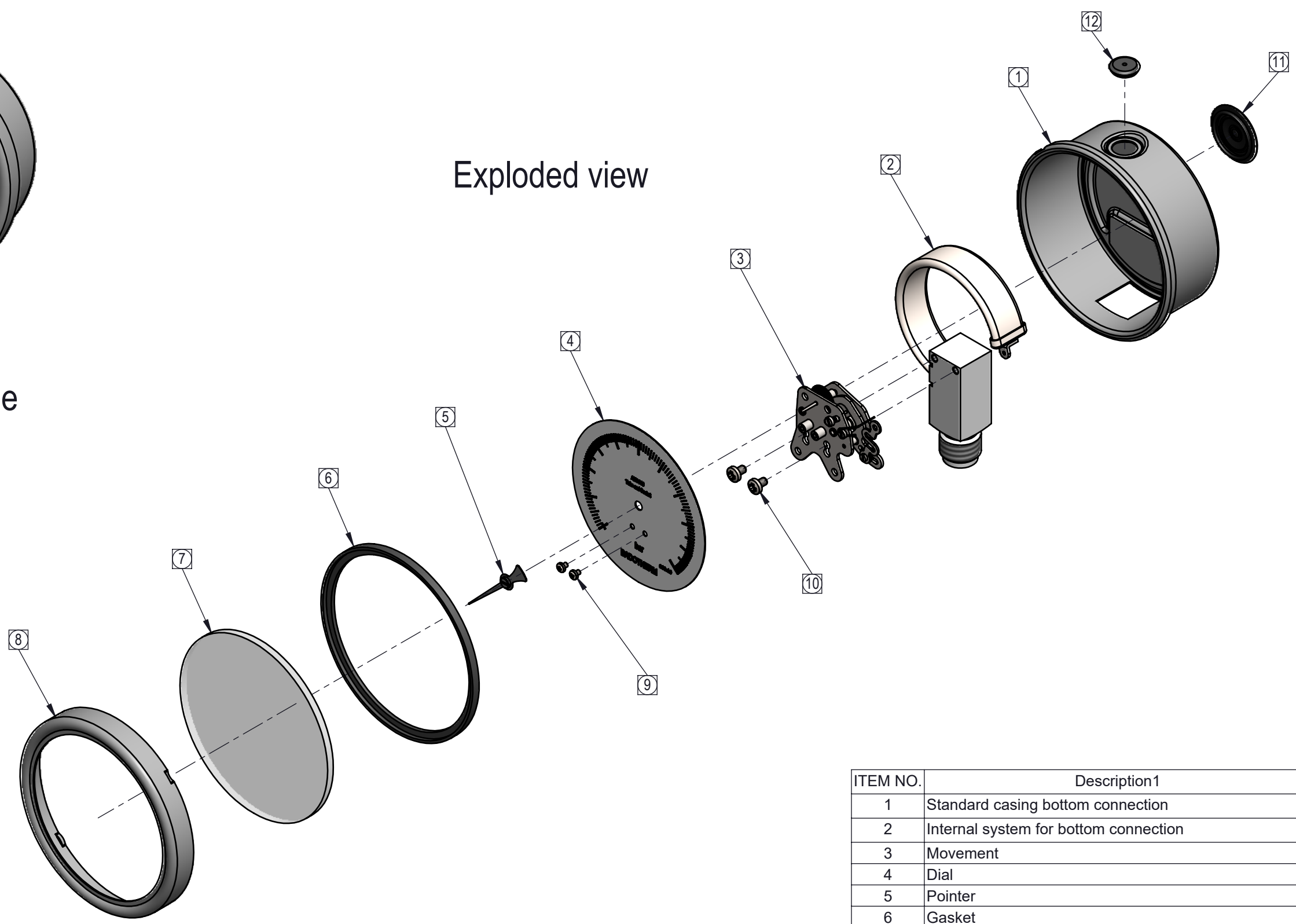




Pressure gauge

Exploded view



DESIGN Draft

| ITEM NO. | Description1                          | QTY. |
|----------|---------------------------------------|------|
| 1        | Standard casing bottom connection     | 1    |
| 2        | Internal system for bottom connection | 1    |
| 3        | Movement                              | 1    |
| 4        | Dial                                  | 1    |
| 5        | Pointer                               | 1    |
| 6        | Gasket                                | 1    |
| 7        | Window                                | 1    |
| 8        | Bezel                                 | 1    |
| 9        | Screw                                 | 2    |
| 10       | Screw                                 | 2    |
| 11       | Blow out                              | 1    |
| 12       | Filling plug                          | 1    |

|  |                          |          |          |                  |           |
|--|--------------------------|----------|----------|------------------|-----------|
| Mass (gr.) 538.50  |                          | Material |          | DocID BDT0038867 |           |
| Revision -na-  | DocConfID                |          |          | CNC no.          |           |
| Roughness acc.<br>(EN) ISO 1302<br>Except dr. holes<br>1.6 | Dimensions               | mm       | Desc. 1  | Pressure gauge   |           |
|  | Scale                    | 1:2      | Desc. 2  | Exploded view    |           |
|  | Size                     | A3 ls.   | Desc. 3  | Type A           |           |
| Measure tolerance<br>acc. ISO2768<br>General - mH          | Projection: acc. iso<br> |          | Created  | Andrei Chiriac   | 4/12/2022 |
|  |                          |          | Approved |                  |           |
|  |                          |          | ERP no.  | -na--            |           |

**BADOTHERM®**

This drawing is intellectual property of BADOTHERM and must be treated confidential. All rights reserved.