

Accessories – Lifting solutions

Description

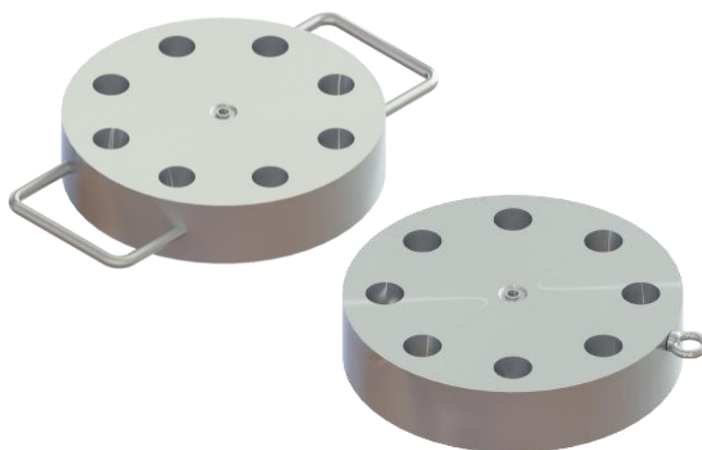
Lifting solutions are very useful to lift and hold the flanges, of which most diaphragm seals are made. On some occasions, the flanges can become very heavy and rather than lifting the diaphragm seal system by the capillaries, it is recommended to lift them by these lifting solutions. Especially the 2" or 3" flanges and the higher ratings as from cl. 900 and higher, can be considered heavy with weights over 10kg per flange up to 35kg for a 3" cl. 2500. Selecting these lifting solutions will add significantly to the health, safety and wellbeing of the operators in the field, as the handling and installation will be significantly improved.

The lifting solutions ensure the capillaries are not used as lifting gear, and the handles allow for easy lifting. Also, for installation purposes, the lifting handles allow for easier positioning of the diaphragm seal flange. The diaphragm remains the delicate part and needs to be handled with care. This is important, because if the diaphragm bumps into a nozzle, it will probably be dented or scratched, which destroys a good measurement.

The heavier diaphragm seal models should always have these lifting solutions. It is recommended to check the weight of the diaphragm seals and consider its impact. On some occasions, lifting solutions could also be handy for the heavy flush or reducer flange assemblies, when there is nothing to hold them with. The handling of these heavy seals is made easier so the risk of damage during internal transport to installation site is even less. It is our recommendation to always use them for following size and classes:

- 2" cl. 1500 and higher
- 3" cl. 900 and higher
- 4" cl. 600 and higher

Often it is we recommend the lifting solutions in combination with a heavy-duty support tube, IP54 or IP68, to extra protect the capillaries welded to the seal part and make it extra robust.



Solution

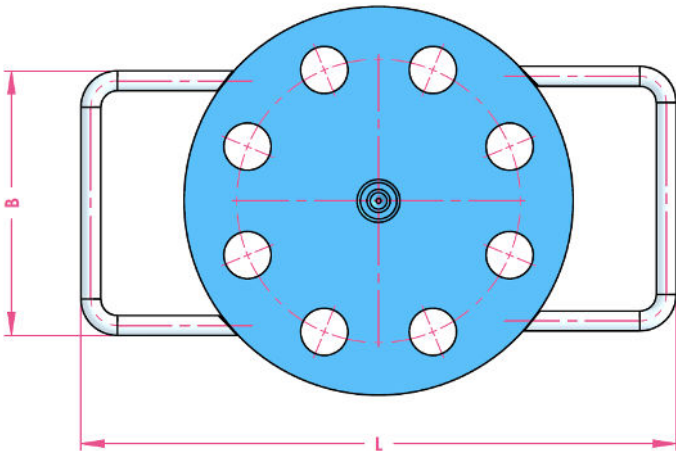
Two solutions are available. Lifting handles and a lifting eye. Both are having their advantages in specific situations.

The lifting handles: handles are introduced many years ago to support maintenance and installation personnel in mounting heavy flanges. After close cooperation with our end-users the dimensions geometry is determined. The opening and the width of the handle is perfect to grab the flange with industrial type of gloves without getting stuck. The solid bar material and the welds to the flange are all designed to last. Even when the flange is lifted by a crane or other lifting support it will hold.

Lifting eye: the lifting eye is more recent added to the production range of lifting solutions. The eye is smaller and is detachable from the flange by M10 or M8 thread. The lifting eye is also CE certified.

Material of construction

The handles and eye are always made from AISI316(L) material. Also, with exotic flanges the lifting handles are AISI316(L). The handles are made from solid bar material and welded to the flange. As the handles are not a wetted or pressurized part, no welding qualification, NDE or material certification is applicable.



Size	Class	Size B	Size L	Total weight flange
2"	cl. 900-1500	160.0	335	10 kg
	cl. 2500		365	15 kg
3"	cl. 900	160.0	370	13 kg
	cl. 1500		400	19 kg
	cl. 2500		450	35 kg
4"	cl. 600	124.0	440	17 kg
	cl. 900	160.0	435	27 kg
	cl. 1500		460	40 kg
	cl. 2500		510	54 kg

ACC 7008 18th of March 2025

Change log

Date	Change

Holland – Romania – India – Thailand – Dubai – USA

To our knowledge, the information contained herein is accurate as of the date of this document. However, neither Badotherm, nor its affiliates makes any warranty, express or limited, or accepts any liability in connection with this information or its use. This information is for technical skilled persons at their own discretion and risk and does not relate to the use of this product in combination with any other product. The user alone finally determines suitability of any information or material in contemplated use, the manner of use and whether any patents are infringed. This information gives typical properties only. Badotherm reserves the right to make changes to the specifications any materials without prior notice. The latest version of the datasheet can be found on www.badotherm.com.

© 2015 Badotherm, all rights reserved. Trademarks and/or other products referenced herein are either trademarks or registered trademarks of Badotherm.